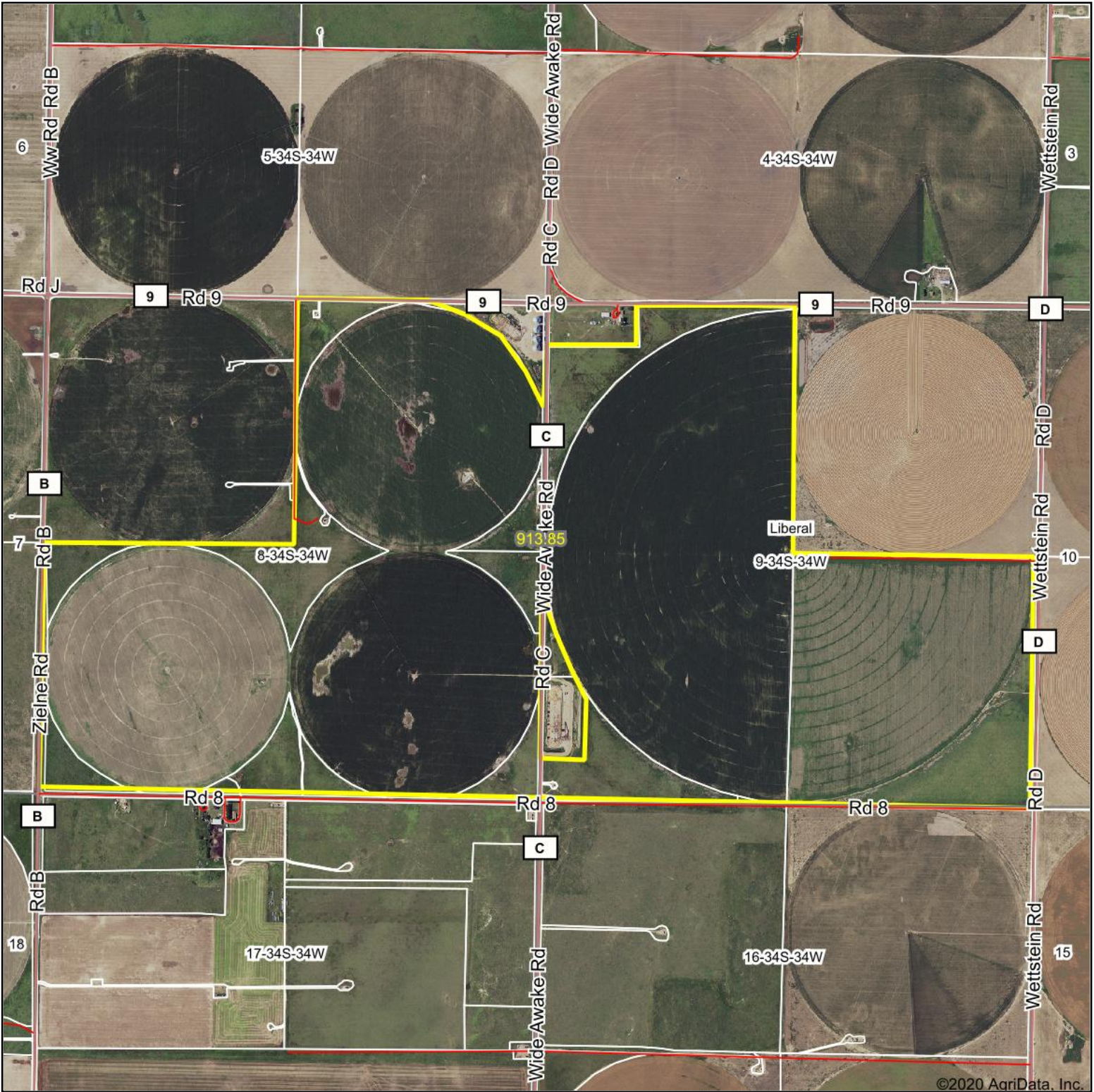
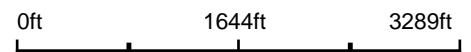


Aerial Map



Map Center: 37° 6' 17.61, -101° 1' 50.6



9-34S-34W
Seward County
Kansas



12/5/2020

Maps Provided By:
 surety
CUSTOMIZED ONLINE MAPPING
© AgriData, Inc. 2020 www.AgridataInc.com

Field borders provided by Farm Service Agency as of 5/21/2008.