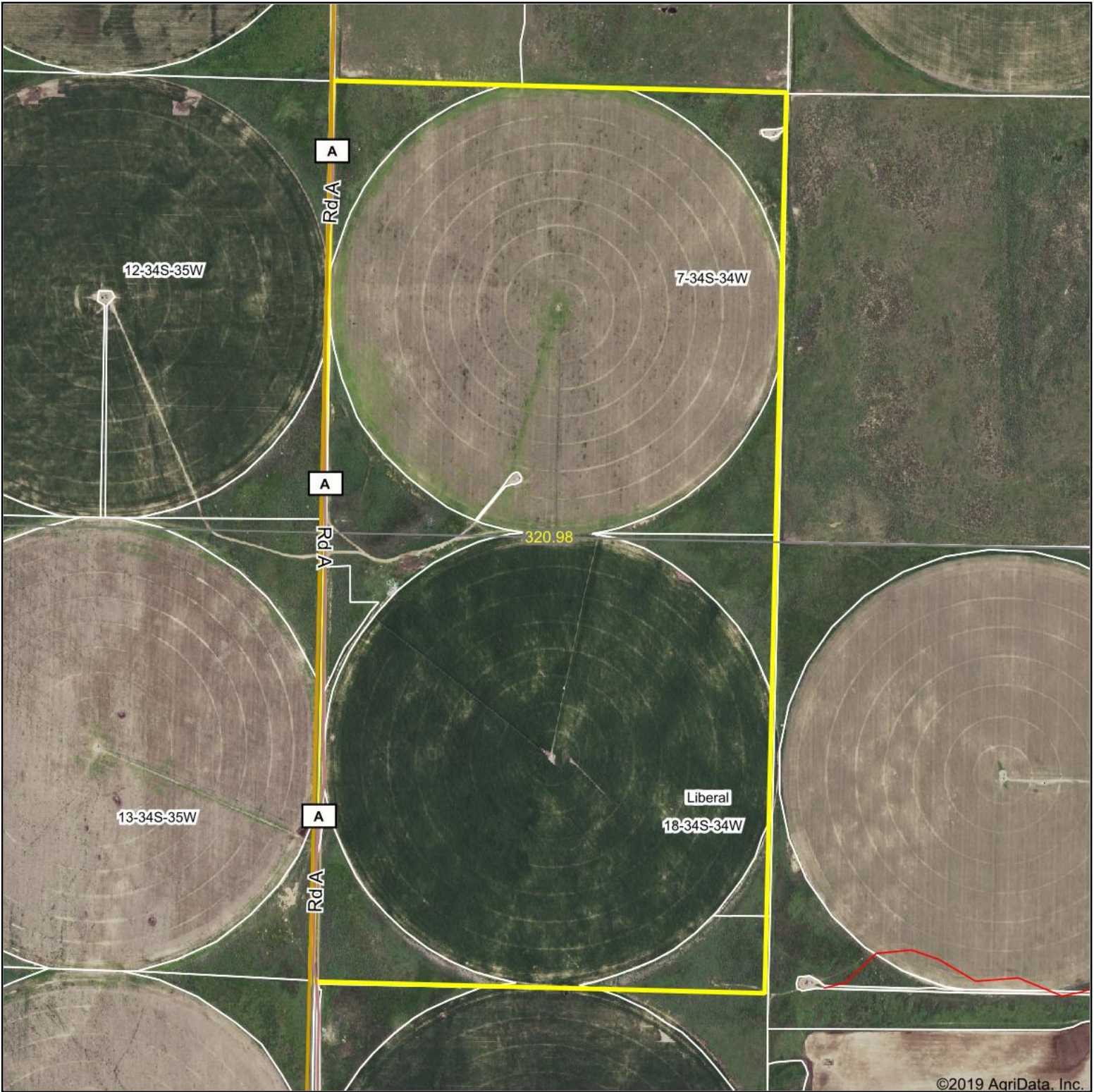


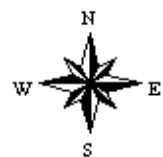
Aerial Map



Map Center: 37° 5' 50.09, -101° 3' 45.78



18-34S-34W
Seward County
Kansas



4/29/2020

Maps Provided By:
 **surety**
CUSTOMIZED ONLINE MAPPING
© AgriData, Inc. 2019 www.AgriDataInc.com

Field borders provided by Farm Service Agency as of 5/21/2008.