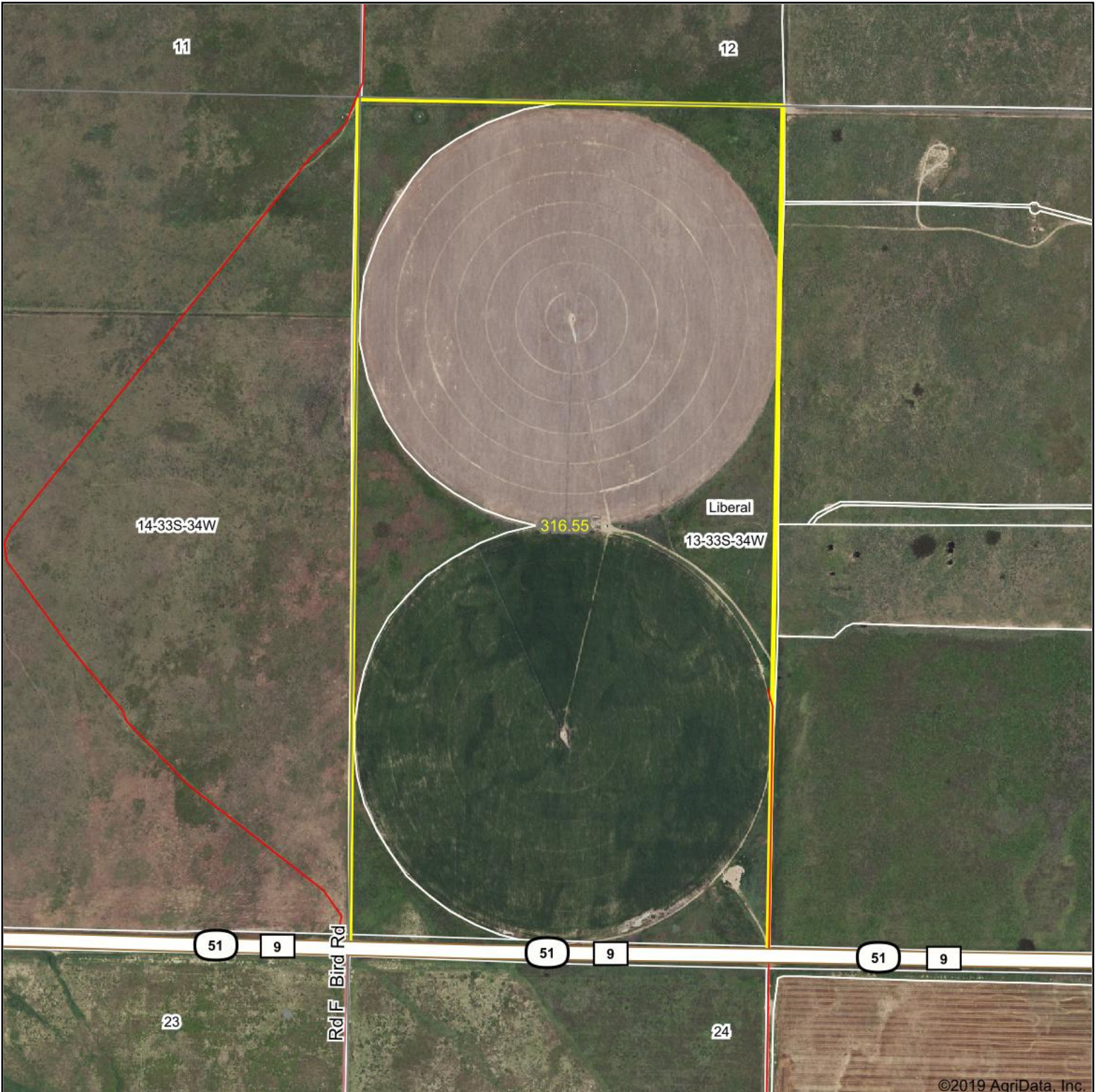
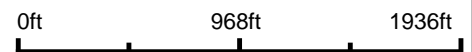


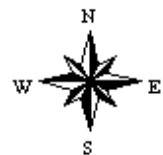
Aerial Map



Map Center: 37° 10' 37.56, -100° 58' 22.05



13-33S-34W
Seward County
Kansas



4/29/2020

Maps Provided By:
 **surety**[®]
CUSTOMIZED ONLINE MAPPING
© AgriData, Inc. 2019 www.AgriDataInc.com

Field borders provided by Farm Service Agency as of 5/21/2008.