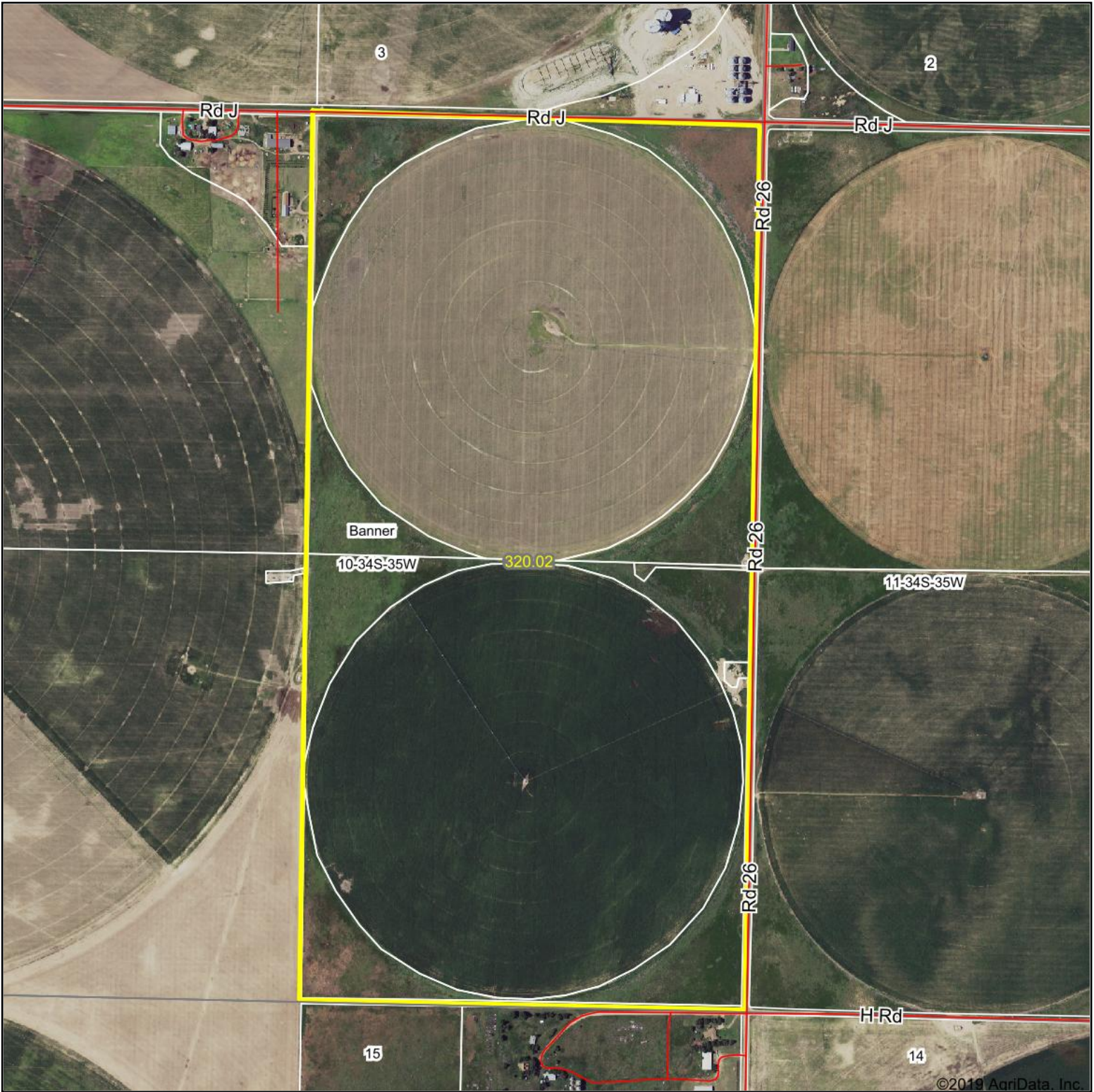


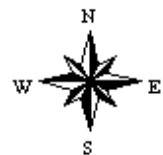
Aerial Map



Map Center: 37° 6' 18.05, -101° 6' 28.14



10-34S-35W
Stevens County
Kansas



4/29/2020

Maps Provided By:
**surety**[®]
CUSTOMIZED ONLINE MAPPING
© AgriData, Inc. 2019 www.AgriDataInc.com

Field borders provided by Farm Service Agency as of 5/21/2008.